

# **Iwe Itumo Ala**

**ATI**

**ESE KAN OPELE (IFA)**

---

**ATUNSE IGBA, KEJI (2)**

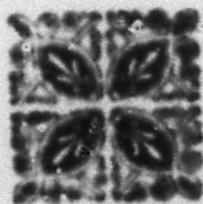
**EYITI A KO JO LATI OWO**

**REVD. D. ONADELE EPEGA**

**IMOLE OLUWA INSTITUTE**

**Ode Remo, Nigeria,**

**West Africa.**



**Olisa Printing Works 1041, Osholake St EB.**



# **OHUN TI NBE NINU IWE YI.**

1. Oro Oluwa
2. Orisun Ire
3. Oro afihan iwe na
4. Itumo Ala
5. Obi ati Ifa
6. Awon Odu 16
7. Awon Oso ati Aje
8. Elere—Aija
9. Ise awon Babalawo
10. Afikun I. Awon Isin ninu osuwon
11. Afikun II. Elere ati awon miran  
ti ni ala babirai.