

# THEY MOVED MOUNTAINS TO BUILD DODGER STADIUM

Treatment for KCET & USC



For the animated documentary, *They Moved Mountains to Build Dodger Stadium*, I would like to take an experimental approach combining hand-made and digital techniques along with voice recordings of quotes.

To tell the early history, scenes transition using the motif of a timeline dial. Social forces that shape the history of the site are seen behind the timeline dial (see concept art at the top left). Animation style will reference the quirky bounciness of Terry Gilliam's *Monty Python* animations (see the image bottom left). The mood of the film will be whimsical and playful with an ironic bent towards the events that displaced residents.

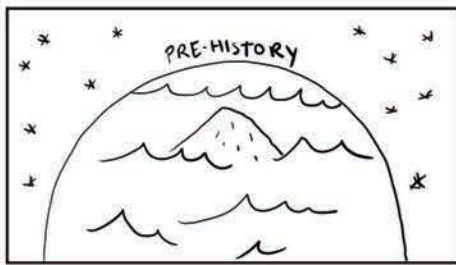


**Medium:** Hand-made paper puppets and background, digitally painted photographs from USC archive.

**Technique:** Digital animation using Adobe After Effects.

Amy Lee Ketchum  
amy.wingfong@gmail.com  
626-840-2663

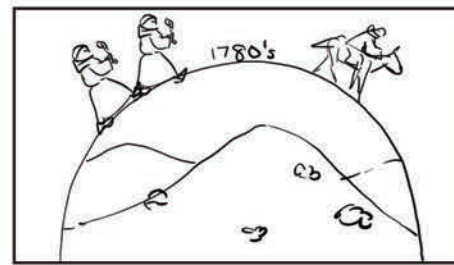
# STORYBOARD - PAGE 1



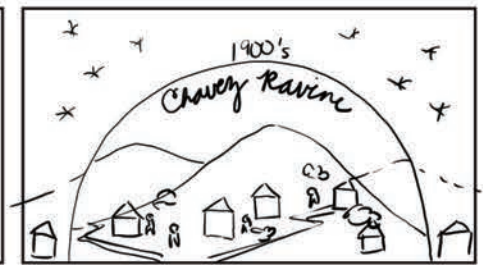
Water subsides and reveals mountain. Paper waves and collaged image of old lithograph.



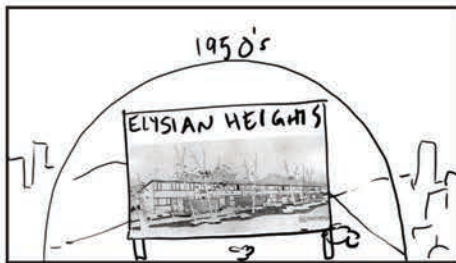
Animals and plants spring up. Tongva people appear. Paper puppets over collaged lithograph.



Missionaries arrive and Tongva people disappear.



Community springs up. Name of Chavez Ravine appears. Collage of photos of houses on mountain.



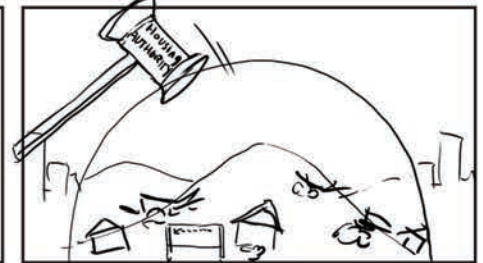
Elysian Park Heights sign appears over the scene.



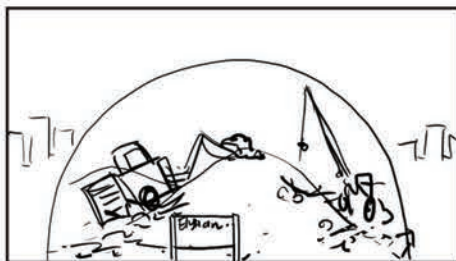
Photo-collaged puppet of Frank Wilkinson delivers a letter to a Chavez Ravine resident.



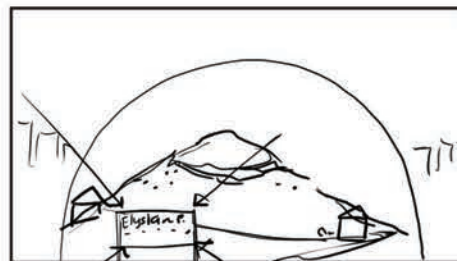
Zoom in on letter.



Mallet labelled Housing Authority, smashes houses in Chavez Ravine.



Bulldozers and cranes begin removing part of the mountain.



Mountain is desolate. Zoom in on sign of Elysian Park Heights.



Sign gets splattered with red paint indicating "Red Scare."



Sign gets splattered with red paint indicating "Red Scare."



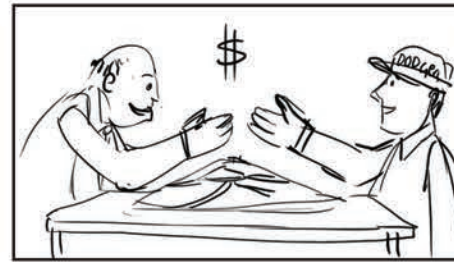
STORYBOARD - PAGE 2



Title card, with letters made with cut paper and photographs of the site.



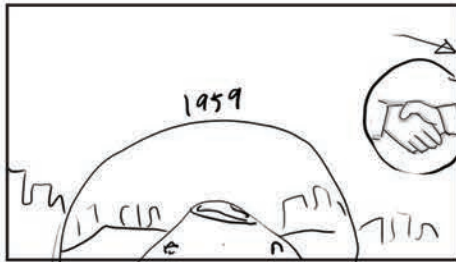
Paper cut out of Walter O'Malley looking over deserted site of Chavez Ravine.



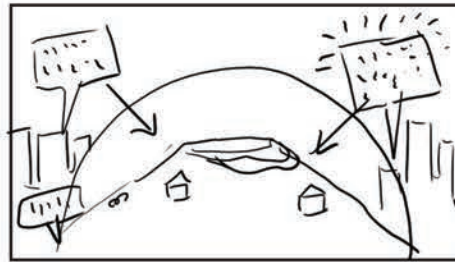
Mountain turns into a model over which photo-puppets of O'Malley and Mayor Poulsen. Their speech bubbles reveal drawings for the future Dodger Stadium.



Hands shake on the deal.



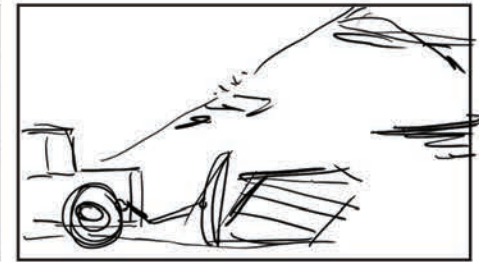
Handshake collapses into a bubble and swooshes off. The dome used at the beginning reveals the desolate Mount Lookout surrounded by abandoned houses and construction.



In the city around the dome, various voices are arguing against the project.



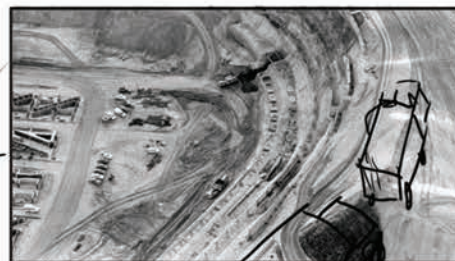
Chattering continues onto a photograph of the ground-breaking ceremony of Dodger Stadium.



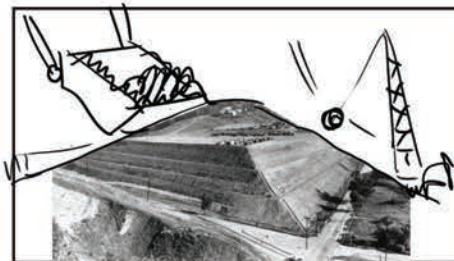
Bulldozers remove remaining houses at the site. Combination of photos of houses and mountain and hand-made bulldozer.



Dirt being thrown on top of Palo Verde school.



Montage of construction of Dodger Stadium with paper work vehicles moving over the photo.

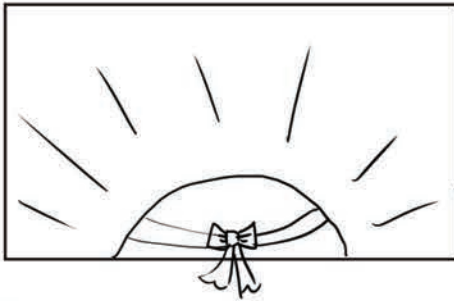


Construction machines lifting dirt off the mountain.

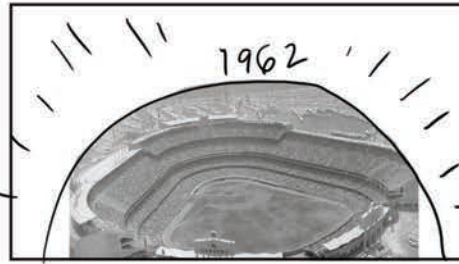


The carved out mountain stands alone and quiet at night. Specters of the people and animals that lived there float above.

STORYBOARD - PAGE 3



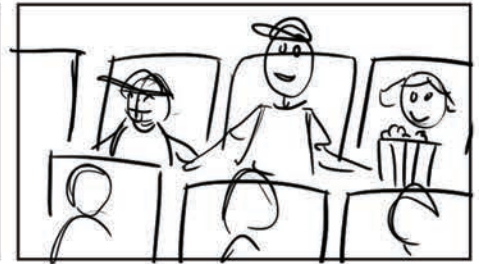
Sun rises over the mountain.  
Cross-fades to a ribbon being cut.



Dome reveals the completed Dodger Stadium.



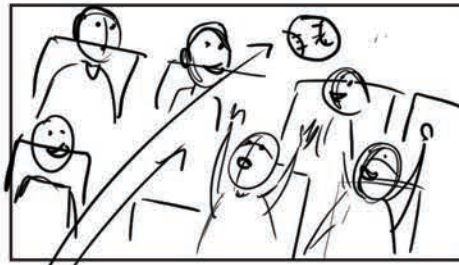
zoom out reveals cars and colored dots of people entering the stadium.



paper puppets of fans sitting in photograph of Dodger seats.



Former occupants of Mount Look-out and Chavez Ravine sitting in stands looking bewildered.



Sound of bat hitting ball, animation of ball flying over the head of fans.



Applause exploding from stadium. Zoom out to Dodger Stadium atop Mount Lookout.



the end.