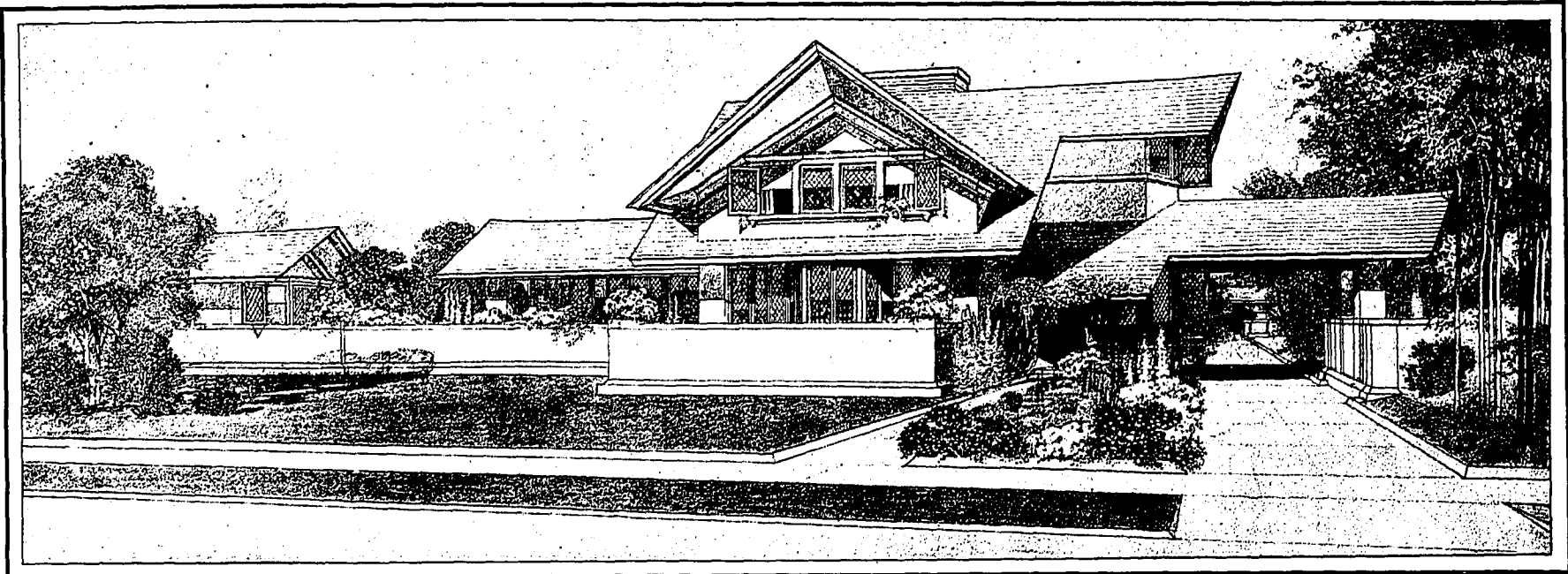


A Small House with "Lots of Room in It"

By Frank Lloyd Wright

NINTH DESIGN IN THE JOURNAL'S NEW SERIES OF MODEL SUBURBAN HOUSES AT MODERATE COST



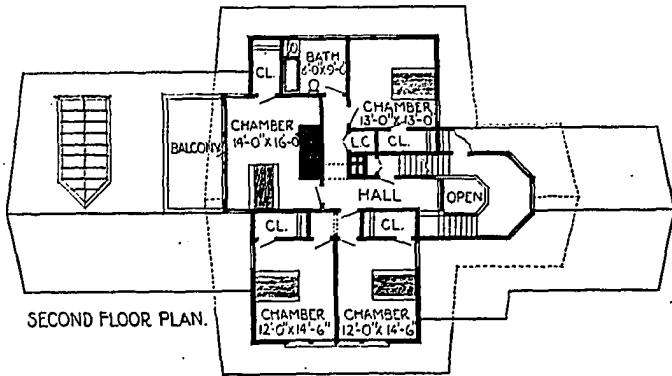
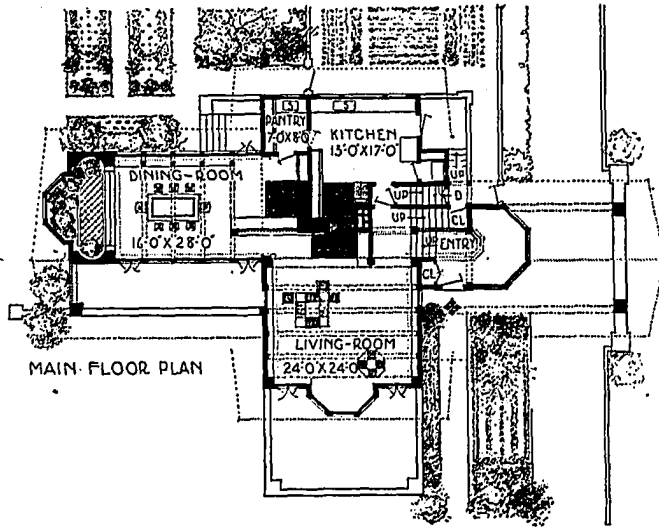
THE average home-maker is partial to the gable roof. This house has been designed with a thorough, somewhat new treatment of the gable with gently flaring eaves and pediments, slightly lifted at the peaks, accentuating the perspective, slightly modeling the roof surfaces and making the outlines "crisp."

The plain disregards somewhat the economical limit in compact planning to take advantage of light, air and prospect, the enjoyable things one goes to the suburbs to secure. With modern systems of heating a distinct freedom in arrangement, denied to earlier builders, is made not only possible, but may be made comfortable with modest outlay. Two large rooms, with an entry performing the function of a little, formal social office, or a waiting-room, to relieve the living-room of undesirable pressure, together with a simple arrangement of stairs and a working department, make up the scheme of the main floor.

IN THIS case the dining-room is made the "feature," with a little indoor garden closing the perspective at its farther end. The dining-table commands the outdoor garden at the rear, and the low windows on the gallery to the street front, the whole countering upon a simple fireplace of brick which combines with the comfortable breadth of fireplace in the living-room. The dining-room is so coupled with the living-room that one leads naturally into the other without destroying the privacy of either.

The living-room is still the heart of the house, and has access to both gallery and terrace, and gives an interesting glimpse of entry and stair landing.

The working department is roomy and convenient. The range is set within a brick-lined, brick-floored alcove, formed by the two fireplaces, the space overhead ventilated into a chimney flue. The servants' stairway reaches the landing of the main stairway, and the servants' room and bath are



situated over this landing, midway between the second and attic floors. The kitchen entry is from the side, and combines with the cellarway to avoid unsightly excrescences.

As the house is free in arrangement, and the main rooms large, a simplicity of material and treatment is necessary. The exterior is plastered with cement plaster. The interior, trimmed with Georgia pine, without mouldings, put on over rough plaster, together with the Georgia pine floors, is to be stained one coat. The outside woodwork, except shingles, is also to be stained. Paint and varnish are not used.

A COMBINATION hot-water apparatus would serve to heat the house perfectly, hot air in the main body of the house, and radiation in the dining-room and entry.

The cost of the house proper, exclusive of grading and walks, would approximate:

Masonry and Stone Water-Table	\$1100.00
Plastering	600.00
Carpentry and Hardware	2950.00
Heating	375.00
Plumbing, Sewer and Gas Fitting	450.00
Staining and Glass	300.00
Electric Wiring	60.00
Total	\$5835.00

The block plans at the lower corners of the page show two schemes for placing the house upon an inside, one-hundred-foot lot. One, as shown in perspective view, broad side to the street; the other alongside the depth of the lot.

EDITOR'S NOTE—As a guarantee that the plan of this house is practicable and that the estimates for cost are conservative, the architect is ready to accept the commission of preparing the working plans and specifications for this house to cost \$5835.00, providing that the building site selected is within reasonable distance of a base of supplies where material and labor may be had at the standard market rates.

